



KONICA MINOLTA

COLOR LASER PRINTING GETS PERSONAL

The magicolor® 1600W is a personal color laser printer for home or office. Stylish and compact, it measures a mere 15.6" x 15" and uses the smallest workspace of any color laser thanks to its fold away trays and total front panel accessibility. Yet this super small printer offers big features. Windows® compatible, the magicolor 1600W sports a USB 2.0 interface for a quick direct connection. Printing is fast at 20 ppm B&W and 5 ppm color, and with a monthly maximum print volume of 35,000 pages, you can count on it in a crunch. The printer uses 1200 x 600 dpi resolution along with Simitri® HD Polymerized Toner to create outstanding color prints that won't ever fade or smear—and cost just pennies a page. Easy to use, small and quick, the magicolor 1600W personal color laser printer is made just for you.



DO BUSINESS BETTER

20 PPM 5 PPM

CONNECT

COMMUNICATE

CONTROL

magicolor 1600W

- ▶ EXTRA-SMALL 15.6" X 15" FOOTPRINT FITS EASILY IN ANY WORK SPACE
- ▶ QUICK 20 PPM B&W, 5 PPM COLOR PRINTING
- ▶ 1200 X 600 DPI FOR RICH COLOR ON ANY BUSINESS PAPER
- ▶ 200-SHEET FOLD-UP INPUT TRAY, 100-SHEET OUTPUT TRAY
- ▶ HI-SPEED USB 2.0 INTERFACE FOR QUICK DIRECT CONNECTION
- ▶ QUIET OPERATION WITH ACOUSTIC NOISE LEVELS LESS THAN 50 DB(A)
- ▶ AFFORDABLE TO OWN—FROM PURCHASE PRICE TO COST PER PRINT
- ▶ WINDOWS VISTA, XP, SERVER 2003 & 2000 COMPATIBLE
- ▶ SUPPORTS UP TO 8.5" X 14" MEDIA; PLAIN, THICK, LABELS, ENVELOPES
- ▶ SIMITRI HD POLYMERIZED TONER CREATES BRILLIANT COLOR
- ▶ REMOTE PANEL UTILITY CLEARLY COMMUNICATES PRINTER AND JOB STATUS
- ▶ PRODUCTIVE, RELIABLE 35,000 PRINT MAXIMUM MONTHLY DUTY CYCLE

magicolor 1600W
_FULL COLOR
_LASER
_PRINTER



The essentials of imaging



magicolor 1600W

GENERAL SPECIFICATIONS

PRINTING PROCESS

PRINT METHOD:

Electrophotographic Laser, 4-Cycle Print System

PRINT SPEED*:

Monochrome: 20 ppm

Color: 5 ppm

*Exact print speed differs depending on system configuration, software application, driver and document complexity.

WARM-UP TIME:

35 seconds

FIRST-PAGE OUTPUT TIME:

Monochrome: 11 seconds

Color: 20 seconds

RESOLUTION:

600 x 600 dpi

1200 x 600 dpi

MONTHLY DUTY CYCLE:

Maximum: 35,000 prints

HARDWARE AND SOFTWARE CAPABILITIES

PROCESSOR:

80 MHz ASIC (PA20)

MEMORY:

16 MB

OPERATING SYSTEM COMPATIBILITY:

Windows Vista

Windows Vista x64

Windows XP

Windows XP x64

Windows Server 2003

Windows Server 2003 x64

Windows 2000

PRINTER EMULATIONS:

Host-based, GDI

PRINTER MANAGEMENT:

Remote Panel Utility

COLOR SUPPORT:

Quick-click color matching

HOST SYSTEM REQUIREMENTS

400 MHz Pentium II with 128 MB RAM

256 MB free disk space

CD-ROM/DVD drive

INTERFACE SUPPORT

Hi-Speed USB 2.0

PAPER HANDLING

STANDARD PAPER INPUT:

200-sheet multipurpose tray*

*Dust cover optional

STANDARD PAPER OUTPUT:

100-sheet face-down output tray

PRINT DUPLEXING:

Manual two-sided printing

PAPER SIZES SUPPORTED*:

200-sheet multipurpose tray:

Letter

Legal

Executive

Folio

Govt. Letter

Govt. Legal

Letter Plus

Statement

A4, A5, A6

B5, B6

Custom sizes (plain paper):

(W) 3.6"-8.5" to (L) 7.67"-14"

(W) 89-216 mm to (L) 194-356 mm

Custom sizes (thick stock):

(W) 3.6"-8.5" to (L) 7.24"-11.69"

(W) 89-216 mm to (L) 184-297 mm

Envelopes: B5 (ISO), DL, C6

*See Konica Minolta Media Guide for more information

PRINTABLE AREA:

0.16" (4.2 mm) from all edges

0.63" (16 mm) from bottom margin of legal pages when printing color

PAPER WEIGHTS:

Plain paper: 16-24 lb. Bond (60-90 g/m²)

Thick Stock: Up to 110 lb. Index (209 g/m²)

PRINT MEDIA:

Plain Paper

Letterhead

Recycled Paper

Thick Stock

Laser Quality Labels

Envelopes

Postcards

PHYSICAL TYPE:

Laser printer, 4-cycle

DIMENSIONS (WXDXH):

15.6" x 15.0" x 10.8"

(399 x 390 x 275 mm)

WEIGHT:

29 lb. (13 kg) - w/o consumables

32 lb. (14.1 kg) - w/ consumables

42.3 lb. (19.2 kg) - as shipped

ELECTRICAL

POWER REQUIREMENTS:

120 VAC, 50/60 Hz

220/240 VAC, 50/60 Hz

POWER CONSUMPTION:

Operating:

1,100 Watts max.

600 W or less B&W

450 Watts or less color

Standby: 250 Watts or less

Energy Saver: 15 W or less

ENVIRONMENTAL

TEMPERATURE REQUIREMENTS:

Operating: 50° to 95° F (10° to 35° C)

Non-Operating: 0° to 95° F (0° to 35° C)

HUMIDITY:

Operating: 15% to 85% RH

Non-Operating: 30% to 85% RH

NOISE LEVELS:

Operating: ≤50 dB(A)

Standby: ≤29 dB(A)

REGULATORY/SAFETY CONFORMITY:

UL, cUL, CSA, FCC-B, CDRH

CONSUMABLES*:

In-Box Toner-

Cyan, Magenta, Yellow, Black (yield up to 500 pages @ 5% coverage)

Replacement Toner-

Cyan, Magenta, Yellow (yield up to 1,500 or 2,500 pages @ 5% coverage)

Black (yields up to 2,500 pages @ 5% coverage)

Drum Cartridge-

Includes OPC Drum and Waste Toner Box (yields up to 45,000 B&W/11,250 color pages - continuous printing)

*The stated life expectancy of each consumable is based on printing under specific operating conditions such as page coverage for a particular page size (5% coverage of letter/A4). The actual consumable's life will vary depending on the use and other printing variables including page coverage, page size, media type, continuous or intermittent printing, and ambient temperature and humidity.

*See Konica Minolta Media Guide for more information

*The stated life expectancy of each consumable is based on printing under specific operating conditions such as page coverage for a particular page size (5% coverage of letter/A4). The actual consumable's life will vary depending on the use and other printing variables including page coverage, page size, media type, continuous or intermittent printing, and ambient temperature and humidity.

TYPEFACES:

Compatible with all Windows and/or TrueType® fonts printed via Windows GDI

WARRANTY:

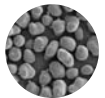
1-year



ENVIRONMENTAL FRIENDLINESS.

SIMITRI HD TONER OPERATES AT A MUCH LOWER TEMPERATURE – SAVES UP TO 15% ENERGY. THE PRODUCTION OF SIMITRI HD TONER EMITS 40% LESS CO₂, NO₂ AND SO₂ THAN THE PRODUCTION OF CONVENTIONAL PULVERIZED TONERS. TONER CARTRIDGES INCLUDED IN THE CLEAN PLANET PROGRAM – 99% OF THE CARTRIDGE MASS IS RECYCLED.

SIMITRI HD POLYMERIZED



PULVERIZED

SIMITRI HD TONER.

SIMITRI HD POLYMERIZED TONER PRODUCES EXCEPTIONAL OUTPUT. ITS PARTICLES ARE SMALLER AND MORE UNIFORM IN SIZE AND SHAPE THAN CONVENTIONAL PULVERIZED TONER, PROVIDING SMOOTHER, MORE NATURAL IMAGES; RICHER GRADATION AND SHARPER TEXT.

COMPACT & STYLISH DESIGN.

SPACE WILL NOT BE AN ISSUE FOR THE MAGICOLOR 1600W. THIS PRINTER IS THE SMALLEST COLOR LASER PRINTER EVER OFFERED FROM KONICA MINOLTA. ITS SMALL FOOTPRINT, WHICH IS ONE OF THE SMALLEST IN THE INDUSTRY, WILL LEAVE MORE WORKING SPACE AT YOUR DESKTOP. AS ANOTHER BENEFIT, THE PAPER INPUT AND OUTPUT TRAYS CAN BE CLOSED WHEN PRINTER IS NOT IN USE TO MINIMIZE SPACE EVEN MORE.

SMALLEST WORKSPACE.

THE 1600W OFFERS THE SMALLEST WORKSPACE WHEN COMPARED TO OTHER COLOR LASER PRINTERS. COMPETITIVE MODELS REQUIRES SPACE FOR PULLING OUT THE PAPER INPUT TRAY, SIDE AIR FLOW VENTILATION OR FOR PAPER JAM ACCESS AT THE REAR OF THE PRINTER.

20 PPM 5 PPM



FPO for FSC logo

magicolor

Simitri HD
High Definition Polymerized Toner



Office imagery courtesy of Knoll, Inc.

© 2009 KONICA MINOLTA BUSINESS SOLUTIONS U.S.A., INC. All rights reserved. Reproduction in whole or in part without written permission is prohibited. Konica Minolta is a trademark of KONICA MINOLTA HOLDINGS, INC. The essentials of imaging is a registered trademark of KONICA MINOLTA HOLDINGS, INC. magicolor is a registered trademark of KONICA MINOLTA BUSINESS TECHNOLOGIES, INC. Simitri is a registered trademark of KONICA MINOLTA BUSINESS SOLUTIONS U.S.A., INC. All other brands and product names are registered trademarks or trademarks of their respective owners.

Design and specifications are subject to change without notice.



KONICA MINOLTA

KONICA MINOLTA
BUSINESS SOLUTIONS U.S.A., INC.

100 Williams Drive
Ramsey, NJ 07446

www.kmbs.konicaminolta.us
www.kmbs.konicaminolta.us/solutions